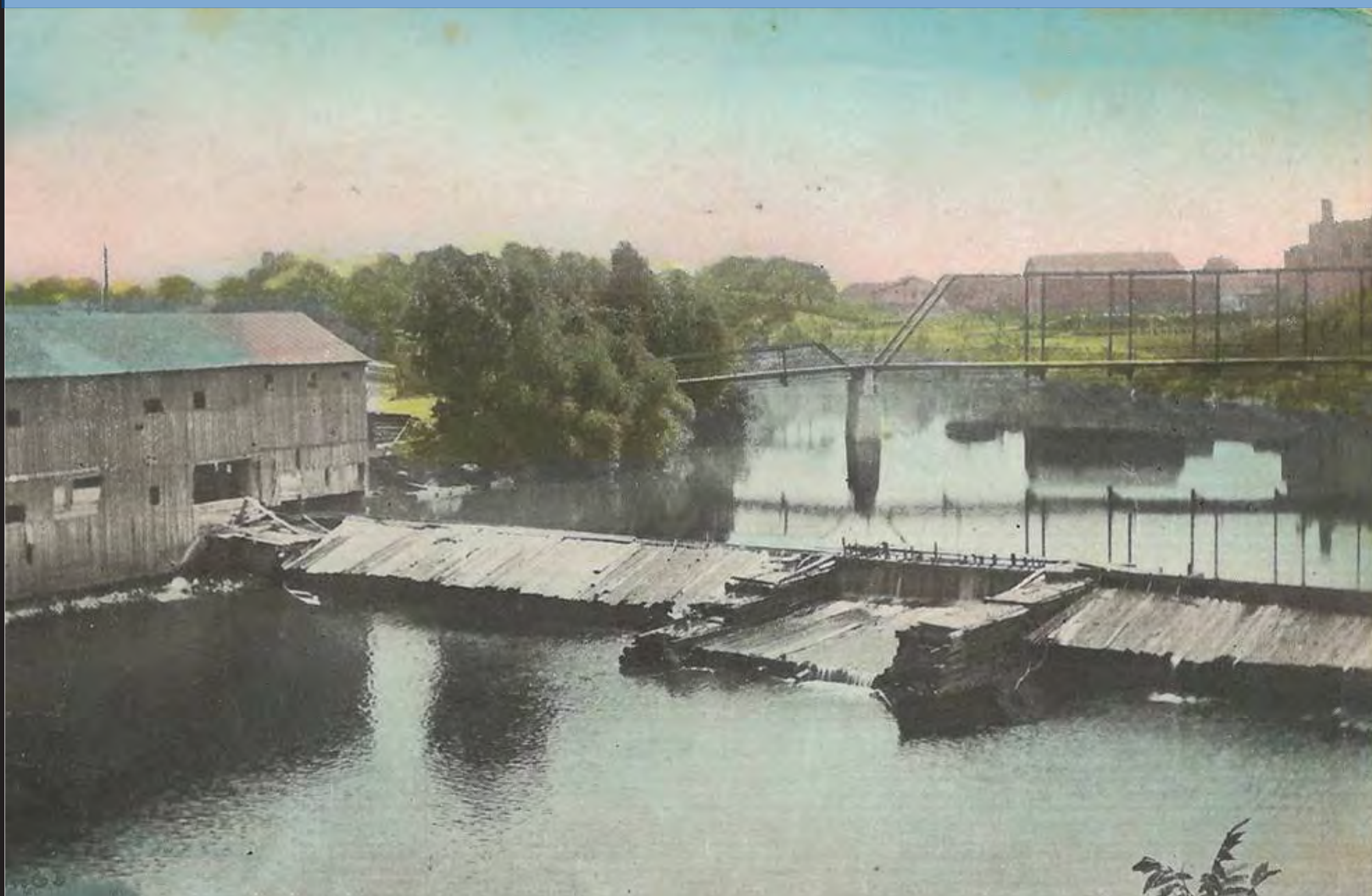


Cass River Water Trail



History of the Frankenmuth Dam

In 1848, the Frankenmuth Dam was constructed on the Cass River. The dam was located next to the village center and used to facilitate grain and lumber industries. The original structure was built with earth and rocks, measuring 13 feet in height and 235 feet in width.



In later years, the dam was converted to a wooden structure. By 1925, the Star of the West Milling Company modified the dam to a concrete structure. For the next 90 years, the concrete structure remained and served only to keep water depth above the dam, allowing river transportation and other commercial activities.

In the 1950's, the dam and surrounding lands were deeded over to the City of Frankenmuth. By the early 2000's, the City was faced with an aging and deteriorating structure requiring major and expensive repairs.

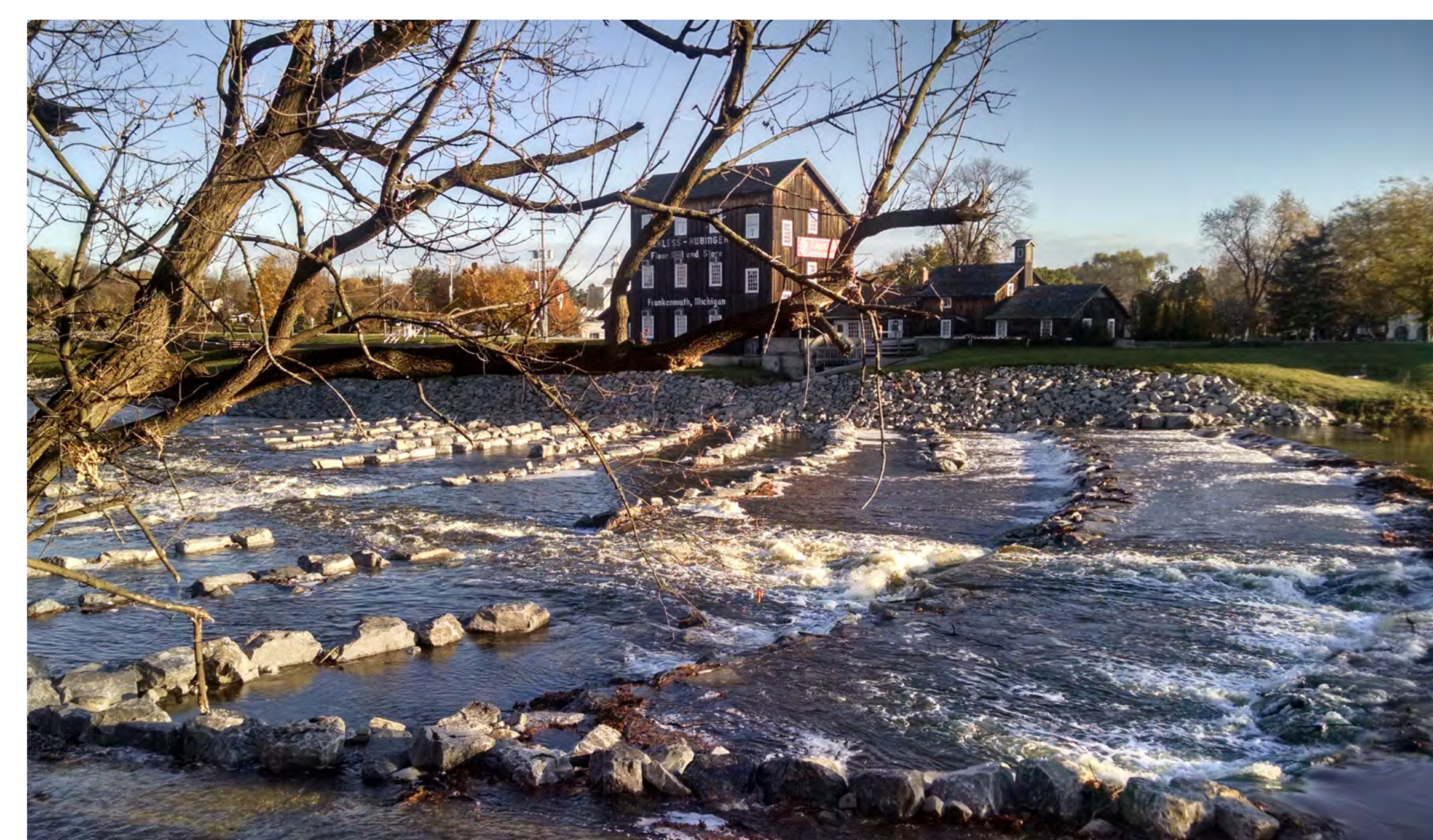
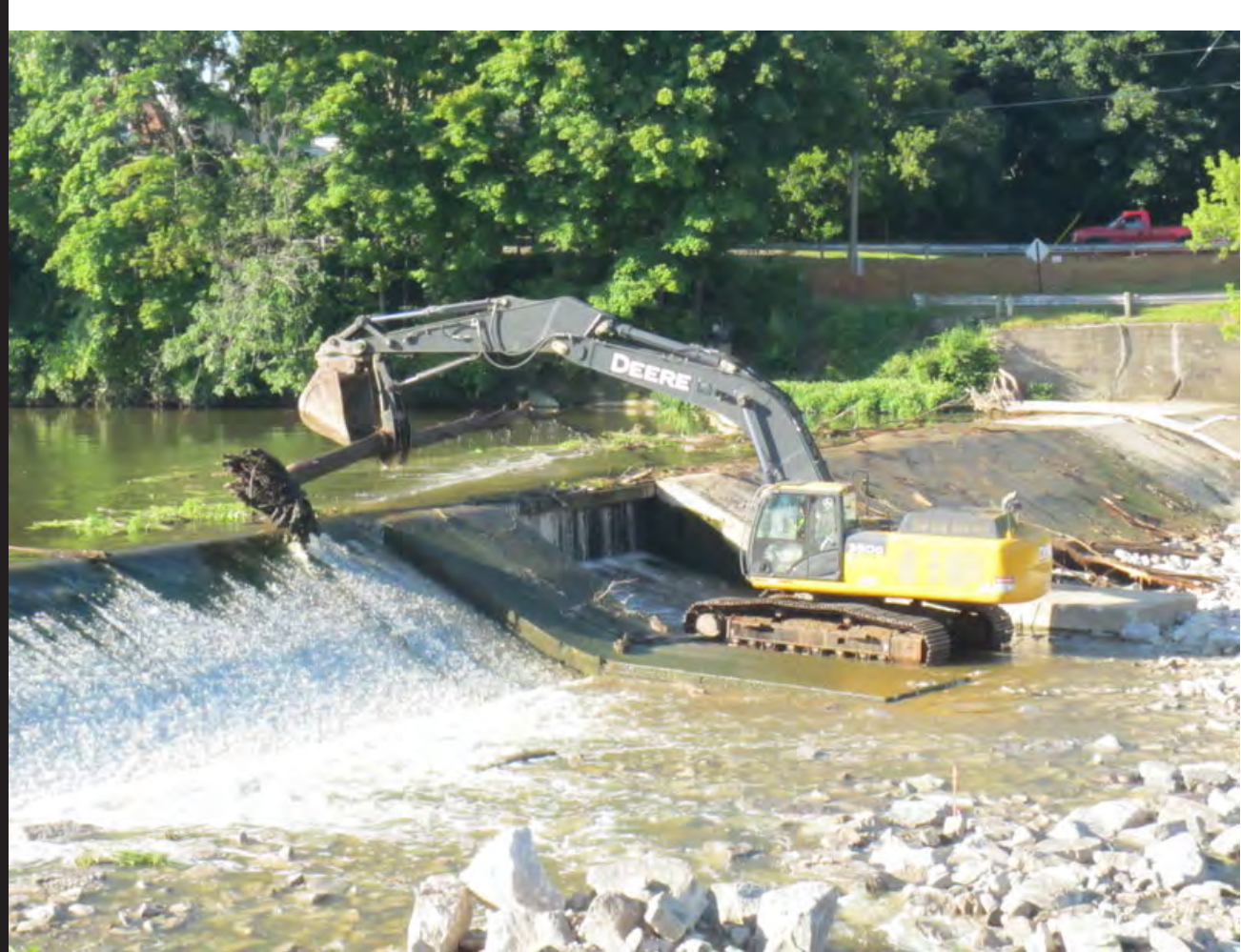
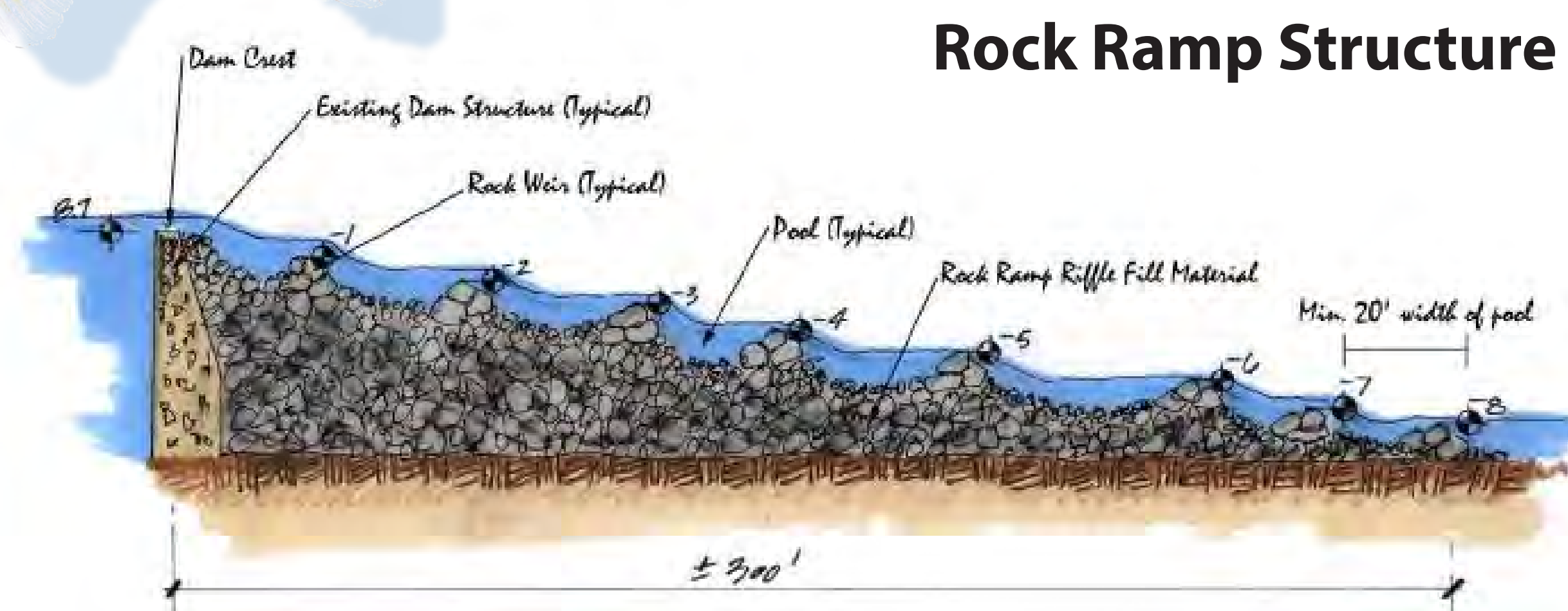


In 2010, the City of Frankenmuth decided to replace the aging structure with a new rock ramp or constructed rapids. The rock ramp opens up 73 miles of river and creeks, allowing fish to swim upstream to spawn. This is extremely important for the Saginaw Bay, enabling natural fish reproduction for the popular Walleye fishery. The rock ramp also allows the Cass River to keep the river profile needed to enable commercial and recreational boating.



Walleye
Sander Vitreus

Rock Ramp Structure



In 2015, working with the U.S. Army Corps of Engineers, the City of Frankenmuth completed the construction of the Frankenmuth Fishway Project, the sight you are now observing.

This sign sponsored by:

- Cass River Greenway

Photos and artwork courtesy of:

- U.S. Corps of Engineers,
- Star of the West Milling Company,
- Ellen River Partners,
- CTI Associates Inc.,
- Frankenmuth Historical Association,
- City of Frankenmuth.